

wePACK 7000



**The perfect machine for packing
your sliced products**

weber

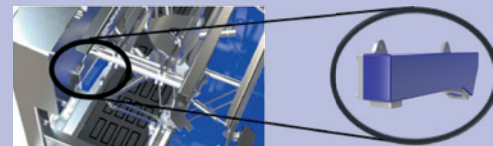
Uncompromising integration – Everything from a single source

From product preparation to quality checked primary packaging, we offer everything from a single source. This unique situation takes the integration of slicers, automation, packaging and end-of-line equipment to a new level. Weber combines strong single components to even stronger complete line solutions. The boundaries between individual components disappear, so that the complete slicing line merges into one unit. These system solutions are always tailor-made for each customer.

Perfect integration especially showing by automated Weber loading solutions such as the wePICK or the CompactLoader in combination with the wePACK. Small footprint, free accessibility and uninterrupted data flow between components are just a few of the many advantages that set new standards in terms of efficiency and effectiveness in slicing production.

Portion position detection via scanner

- › Automatic, unique position correction
- › Fast and easy product changeover
- › Reduction of manual intervention
- › Process reliability due to automatic control circuits
- › Communication to each item of Weber equipment to regulate process parameters



Mechanical integration

- › Small footprint
- › Optimal accessibility
- › Perfect, gentle product handling
- › Always a perfect match
- › Ready to go, right from the start



Same components

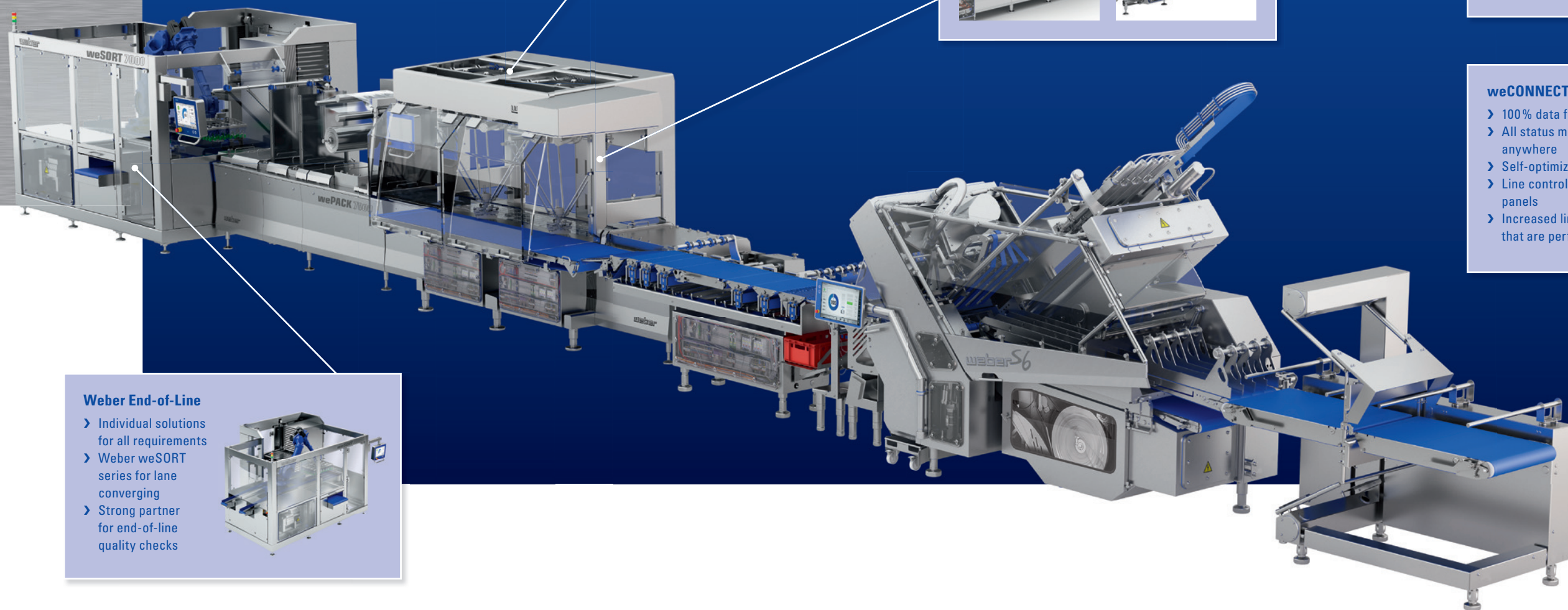
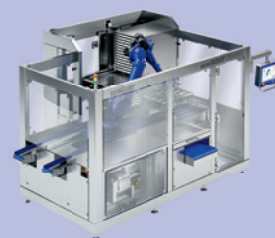
- › Reduced spares inventory and spare parts costs
- › Low operating costs
- › Everything from a single source

weCONNECT

- › 100 % data flow throughout the entire line
- › All status messages available anytime and anywhere
- › Self-optimizing and self-learning line control
- › Line control can be done via fewer control panels
- › Increased line efficiency due to processes that are perfectly adapted to each other

Weber End-of-Line

- › Individual solutions for all requirements
- › Weber weSORT series for lane converging
- › Strong partner for end-of-line quality checks

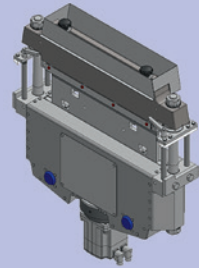


Whatever you slice, wePACK

Right from the start, the development of the wePACK was focused intently on the requirements of our customers. The result is a packaging machine which is consistently geared to slicing applications and which delivers maximum output, as well as ease of operation and servicing. Thanks to its hygienic design and a high level of automation, the wePACK guarantees maximum food safety.

Weber Performance Cutting

- › Optimized for slicing applications
- › Innovative electrical drives
- › Lubrication-free
- › The right tool for every film combination
- › Tool-free and fast knife exchange

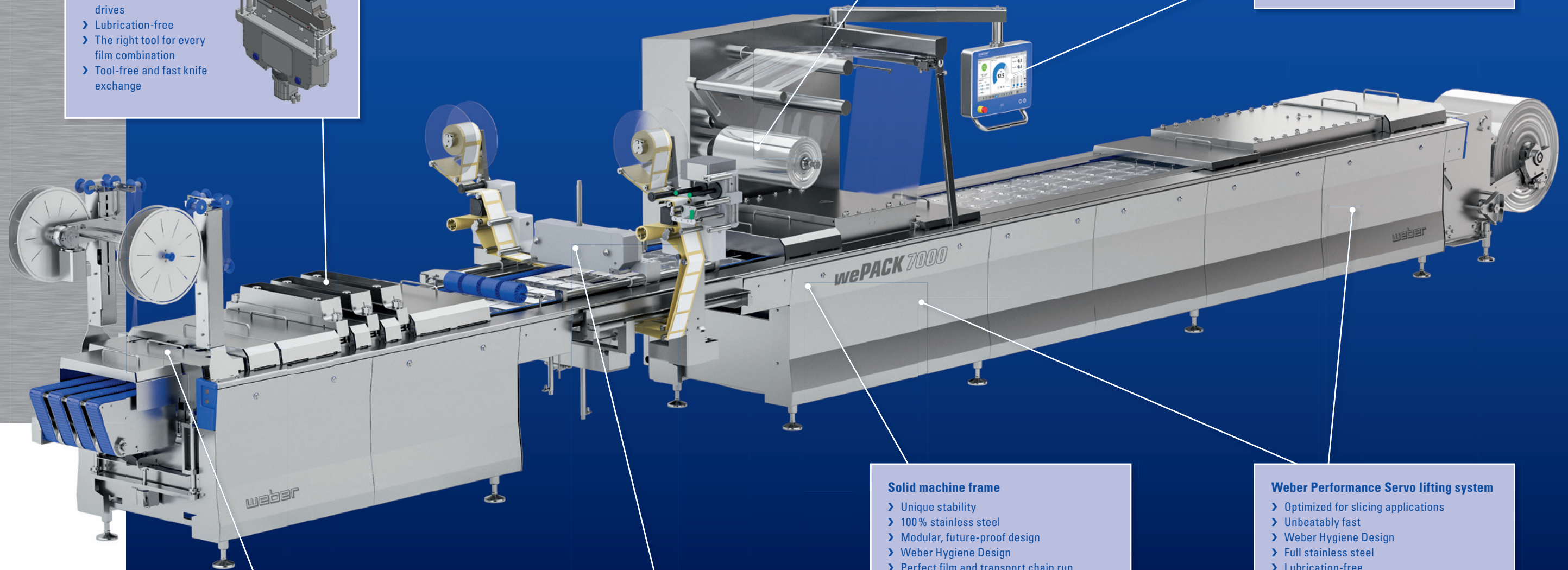
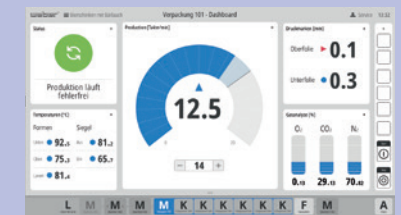


Top film unwind

- › Intelligent servo handling
- › Consistent, defined film tension
- › Low changeover times due to less guide rollers

Weber Power Control

- › Intuitive, award-winning operation concept
- › Consistent operating interface on all Weber machines
- › Consistent development, always up-to-date
- › Intelligent and self-learning



Weber roller shear cutting

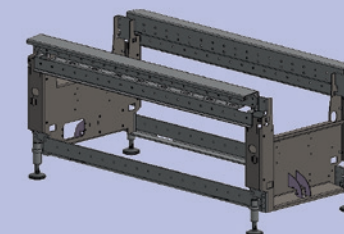
- › Unique, quick-change system
- › Reduced blade wear
- › Optional IP69K stainless steel drive for setting the cutting speed

Labelling and printing technology

- › Fully integrated labellers, printers or inkjets
- › Individually adapted to your wishes
- › Manufacturer-independent

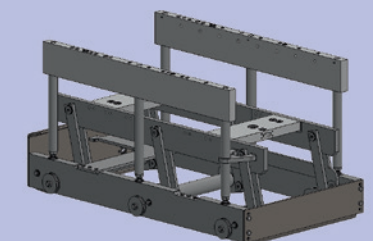
Solid machine frame

- › Unique stability
- › 100% stainless steel
- › Modular, future-proof design
- › Weber Hygiene Design
- › Perfect film and transport chain run



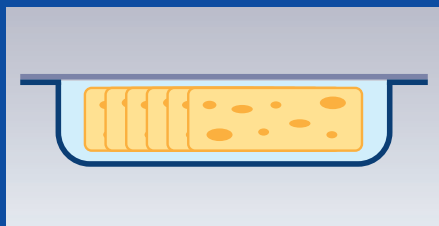
Weber Performance Servo lifting system

- › Optimized for slicing applications
- › Unbeatably fast
- › Weber Hygiene Design
- › Full stainless steel
- › Lubrication-free
- › Optional IP69K stainless steel drive

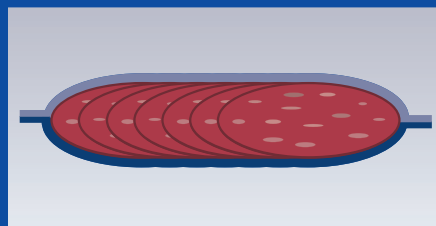


Possible applications

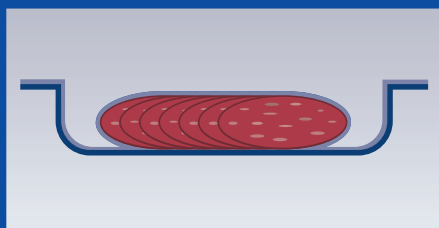
MAP



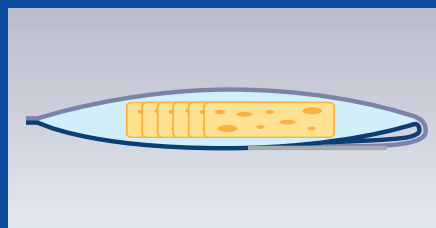
Vacuum



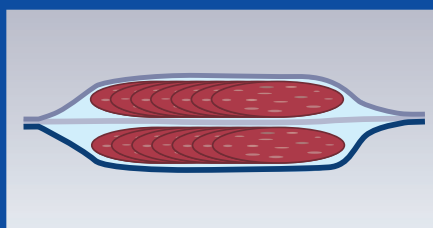
Skin



Envelopement



Multilayer



weber

Weber Maschinenbau GmbH Breidenbach

Günther-Weber-Straße 3 · 35236 Breidenbach · Germany
Fon: +49 6465 918-0 · Fax: +49 6465 918-1100

Weber Maschinenbau GmbH Neubrandenburg

Feldmark 11 · 17034 Neubrandenburg · Germany
Fon: +49 395 4506-0 · Fax: +49 395 4506-1110

info@weberweb.com · www.weberweb.com